

9732 Foam insert 6004 Joker set 1, 5 pieces

6004 Joker Self-setting, adjustable spanner



EAN:	4013288225337	Size:	405x185x55 mm
Part number:	05150122001	Weight:	1675 g
Article number:	9732	Country of origin:	CZ
		Customs tariff number:	82041200

- Durable foam insert, each tool has its own place; two-coloured, missing tools will quickly be noticed
- High-quality, durable foam insert without chemical vapours
- Optimum fit for the best possible removal of the tools from the foam insert
- Water- and oil-repellent, low maintenance and easy to clean
- Protection of the tool from dirt and impact
- The adjustable Joker 6004 covers all metric and imperial dimensions in the respective field of application
- Automatically and continuously gripping hexagonal screws and bolts
- Lever mechanism upon gripping prevents slipping and damage

Durable foam insert; two-coloured for quick identification of missing parts; suitable for the Tool Rebel roller cabinet; equipped with 5 self-setting Wera 6004 Joker spanners.

Web link

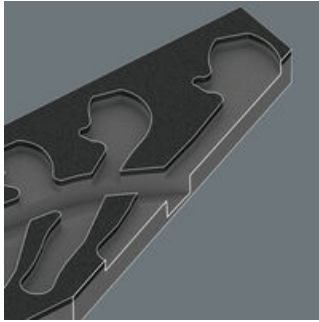
https://products.wera.de/en/joker_6004_joker_self-setting_adjustable_spanner_9732.html

Wera - 9732
05150122001 - 4013288225337

Wera Werkzeuge GmbH
Korzter Straße 21-25
D-42349 Wuppertal
Tel: +49 (0)2 02 / 40 45-0
E-Mail: info@wera.de

6004 Joker Self-setting, adjustable spanner

Safe storage and quick overview



The tools sit securely in the foam thanks to precise contour cutouts, but are easy to remove. The carefully designed arrangement of the tools ensures space-saving storage and quick access to each tool.

Two-coloured foam insert



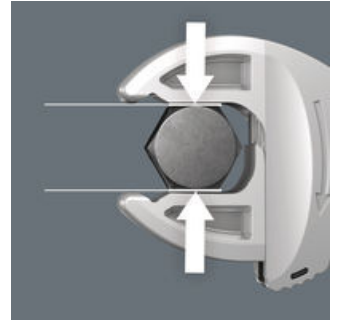
After removing the tool the light grey second foam becomes visible and therefore missing tools are quickly identified.

Joker 6004: automatically and continuously self-setting



With its automatically and continuously gripping parallel jaws the Joker spanner 6004 covers all dimensions in the respective field of application. The tool automatically finds the required size when placed on the bolt or screw, no setting required.

Joker 6004: gentle to the screw



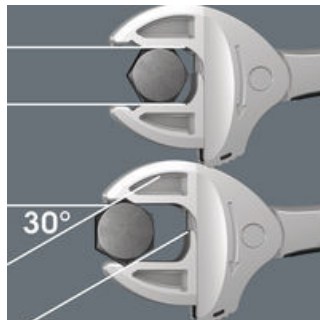
The parallel smooth jaws of the Joker 6004 allow surface pressure and can thus prevent rounding of the bolt or screw head, which can occur during power transmission via the corners.

Joker 6004: Ratchet mechanism for quick working



The ratchet feature in the jaw ensures fast and consistent screwdriving without removing the tool.

Joker 6004: low return angle



The corner-width rectangular prisms in the jaw allow a return angle of only 30°.

Web link

https://products.wera.de/en/joker_6004_joker_self-setting_adjustable_spanner_9732.html

Wera - 9732

05150122001 - 4013288225337

Wera Werkzeuge GmbH

Korzter Straße 21-25

D-42349 Wuppertal

Tel: +49 (0)2 02 / 40 45-0

E-Mail: info@wera.de

9732 Foam insert 6004 Joker set 1, 5 pieces

6004 Joker Self-setting, adjustable spanner

Set contents:

6004 Joker XS Self-setting spanner, 7-10 x 1/4-3/8" x 117 mm

05020099001 1x 7-10 x 1/4-3/8" x 117 mm



6004 Joker S Self-setting spanner, 10-13 x 7/16-1/2" x 154 mm

05020100001 1x 10-13 x 7/16-1/2" x 154 mm



6004 Joker M Self-setting spanner, 13-16 x 1/2-5/8" x 188 mm

05020103001 1x 13-16 x 1/2-5/8" x 188 mm



6004 Joker L Self-setting spanner, 16-19 x 224 mm

05020101001 1x 16-19 x 224 mm



6004 Joker XL Self-setting spanner, 19-24 x 3/4-15/16" x 256 mm

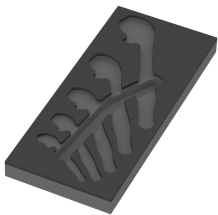
05020104001 1x 19-24 x 3/4-15/16" x 256 mm



9832 Foam insert 6004 Joker Set 1, empty, 172 x 30 x 392 mm

05137332001¹⁾ 1x 172 x 30 x 392 mm

1) Attention: The foam insert does not fit in the previous model 05501051001 of the roller cabinet.



Web link

https://products.wera.de/en/joker_6004_joker_self-setting_adjustable_spanner_9732.html

Wera - 9732

05150122001 - 4013288225337

Wera Werkzeuge GmbH

Korzter Straße 21-25

D-42349 Wuppertal

Tel: +49 (0)2 02 / 40 45-0

E-Mail: info@wera.de